

REPAINT TENNIS COURTS & INSTALL NEW FENCE

ENHANCE LANDSCAPE AT ENTRANCE, ADD SIGNAGE

~~BUILD NEW COMMUNITY CULTURAL/ACTIVITY CENTER~~

INSTALL NEW SOFTBALL FIELD

UPGRADE SKATING POND ACCESS FOR SKATERS AND MAINTENANCE
ADD NEW BENCHES AND LIGHTING

INSTALL NEW PARK FURNITURE, BENCHES, TRASH RACKS AND UPGRADE SIGNAGE

CONSTRUCT 6' - 8' WIDE ASPHALT TRAIL

ENHANCE LANDSCAPE

USE EXISTING SIDEWALK FOR TRAIL

ADD STREET TREES ALONG FRONTAGE

REPLACE TOT LOT (AGES 2 - 5)

EXPAND YOUTH PLAYGROUND (AGES 5 - 12)

REGRADE, AERATE, AMEND TOPSOIL AND RESEED FOOTBALL/MULTIPURPOSE FIELD
REPOSITION OR INSTALL NEW LIGHTS

INSTALL COMMUNITY DEMONSTRATION "EVERYBODY'S GARDEN" AT POOL ENTRANCE

ADD NEW PICNIC GROVE
5 - 8 TABLES & TRASH RACKS

CONSTRUCT 6'-8' WIDE ASPHALT TRAIL

INSTALL NEW PARKING SPACES
12 OFF-STREET PARKING SPACE:

IMPROVE DRAINAGE
REGRADE SWALES, INSTALL NEW PIPES AND PEDESTRIAN BRIDGE, REMOVE DEBRIS

PLANT SCREEN BUFFER

ENHANCE LANDSCAPE AT PARK ENTRANCE, ADD SIGNAGE

RENOVATE ROUNDHOUSE
ADD HEAT, IMPROVE ENTRANCE, USE 2ND FLOOR, ADD PORT-A-JOHN, SHADE STRUCTURE AND TABLES
-OR-
REMOVE AND REPLACE WITH A GAZEBO

EXTEND PAVEMENT BEYOND STANDARDS

ADD SAND VOLLEYBALL COURT (1)

MAP 2

PARK IMPROVEMENT PLAN
CRESTMONT PARK

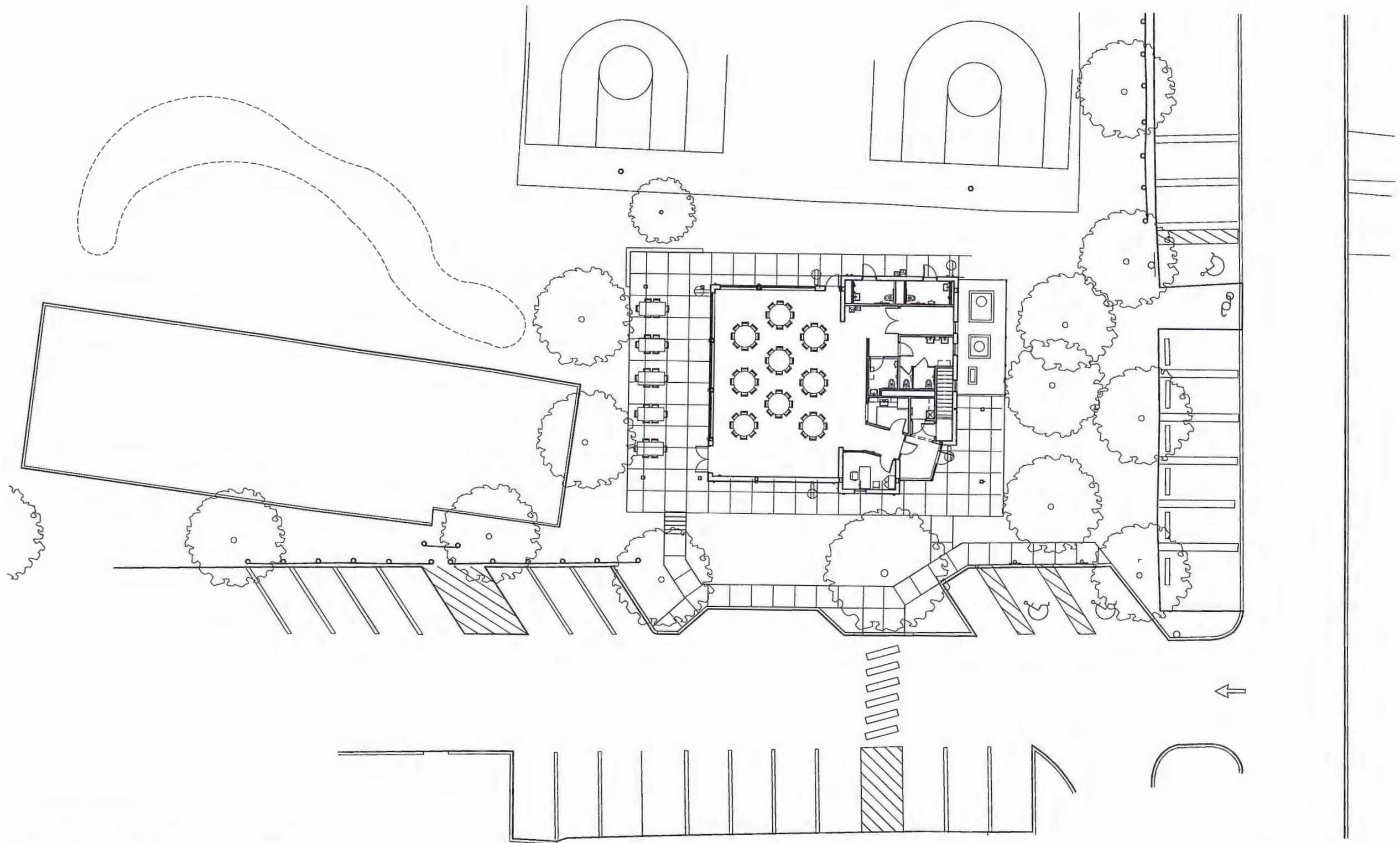
TOWNSHIP OF ABINGTON
BUREAU OF PARKS AND RECREATION

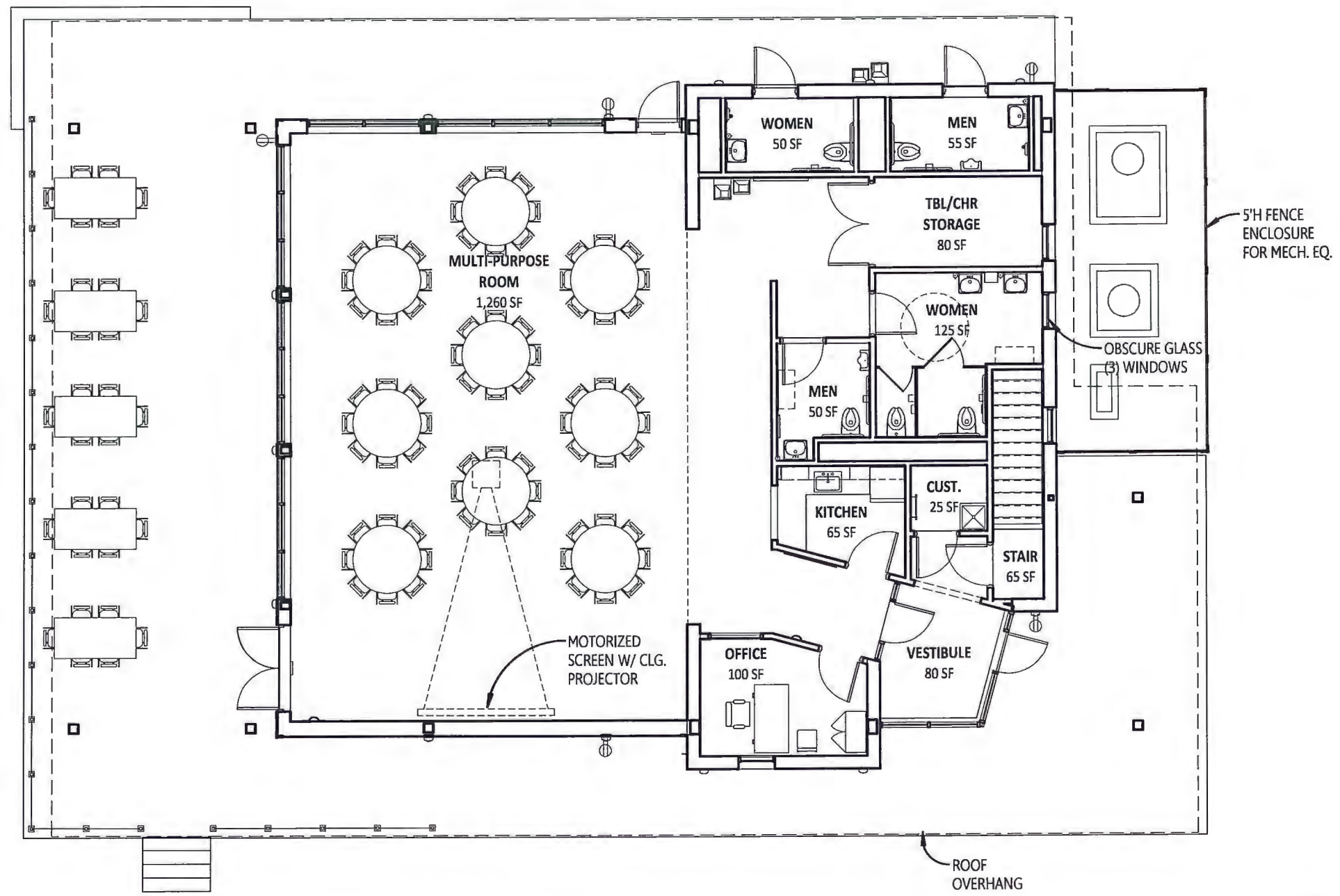
NO. 1	PREPARED BY	DATE
NO. 2	APPROVED BY	DATE
NO. 3	REVISION	DATE
NO. 4	PLAN NUMBER	REVISION

PROPOSED NEW BUILDING

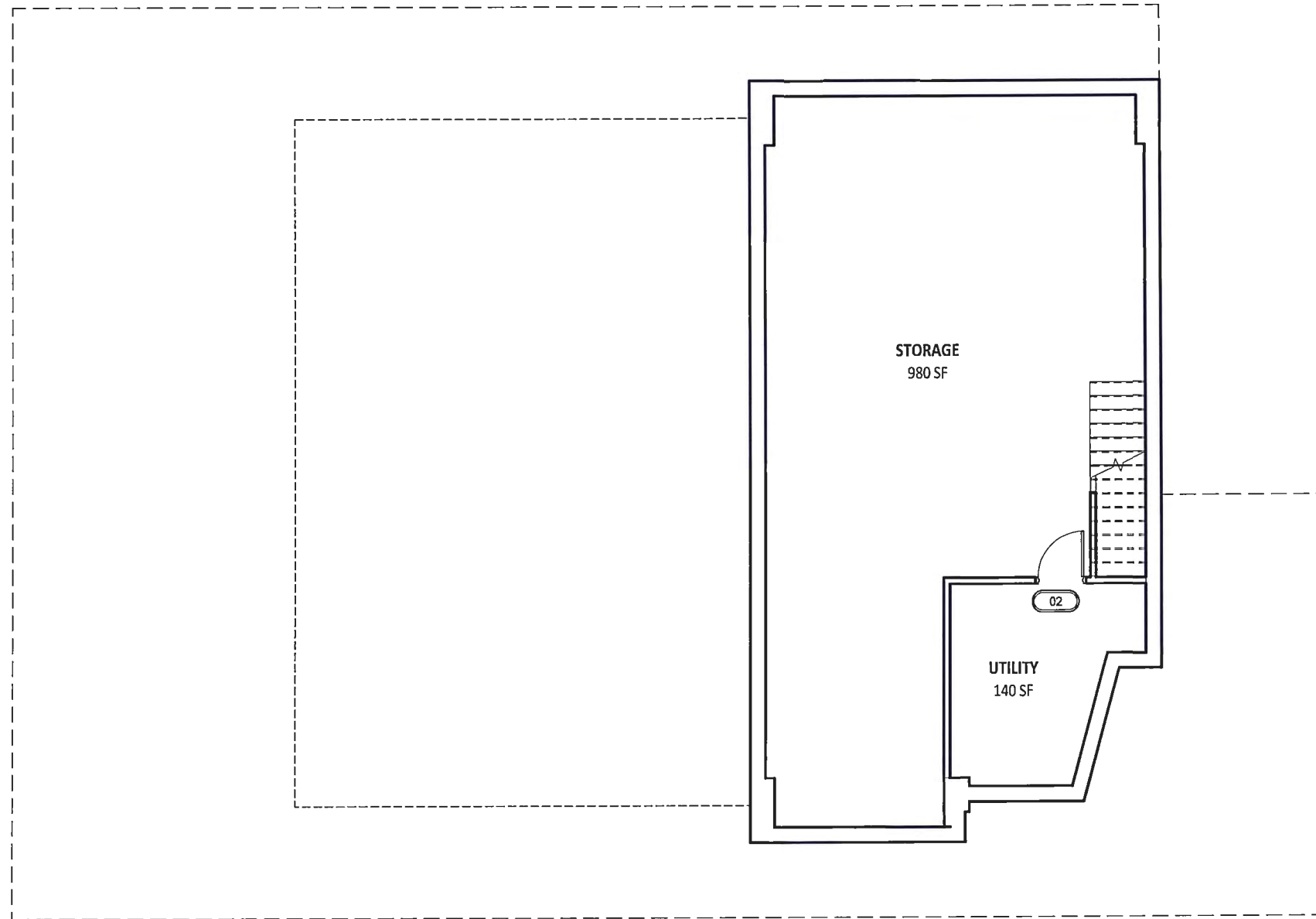


CRESTMONT
CLUBHOUSE





FIRST FL AREA - 2,620 SF.



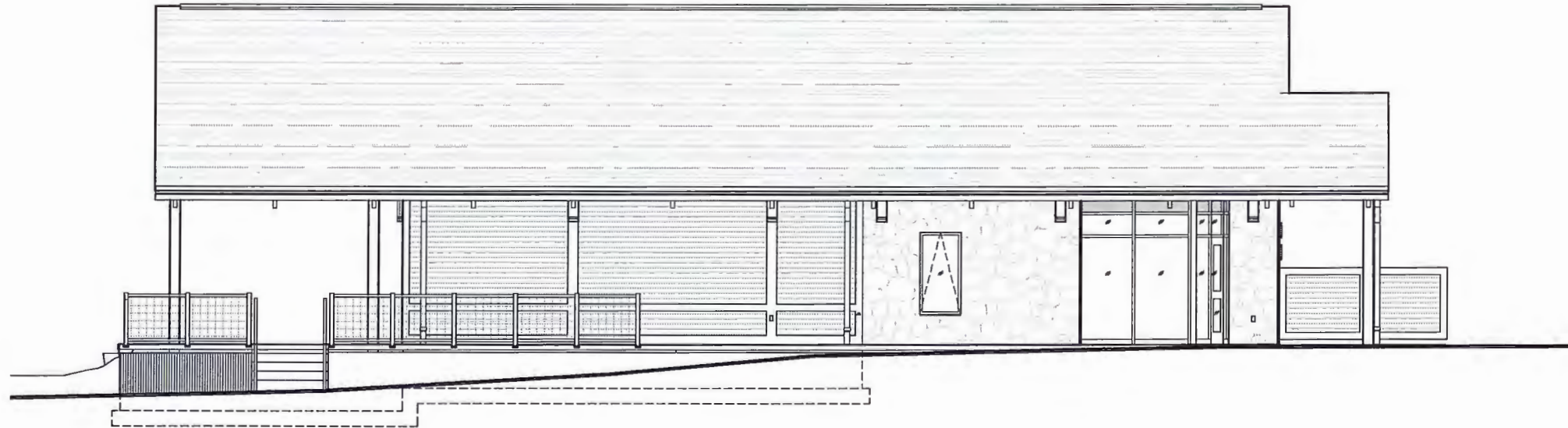
BASEMENT AREA - 1,165 SF.





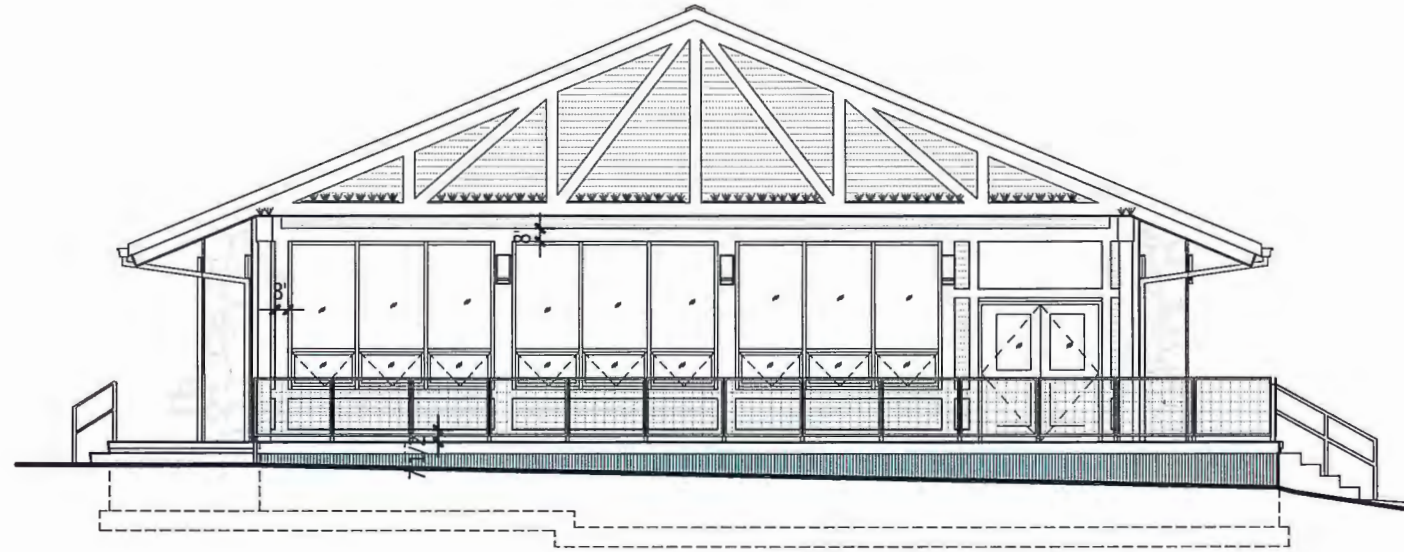
SOUTH ELEVATION

1/8" = 1'-0"



WEST ELEVATION

1/8" = 1'-0"



NORTH ELEVATION
1/8" = 1'-0"



EAST ELEVATION
1/8" = 1'-0"