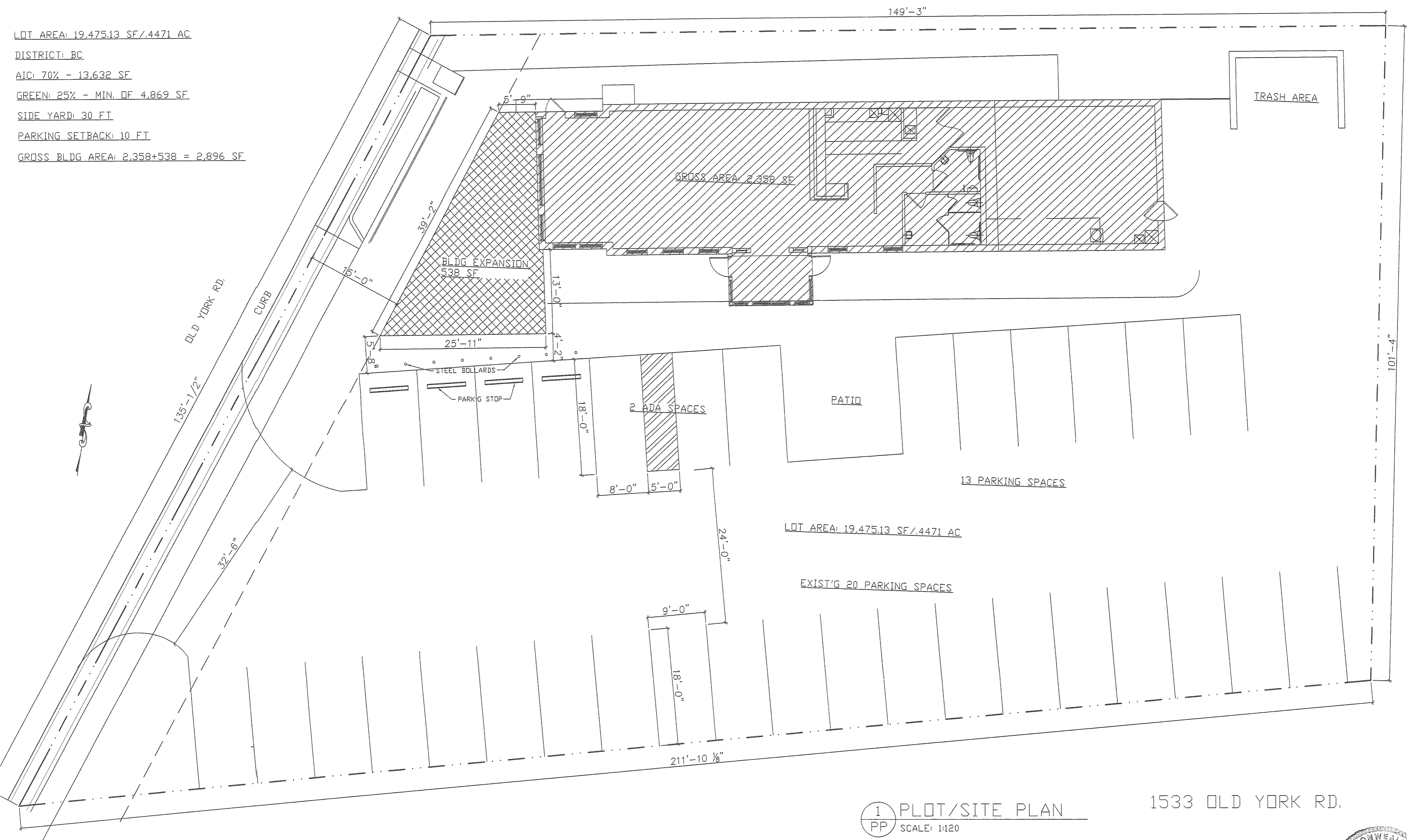


LOT AREA: 19,475.13 SF / 4.471 AC
 DISTRICT: BC
 AIC: 70% - 13,632 SF
 GREEN: 25% - MIN. OF 4,869 SF
 SIDE YARD: 30 FT
 PARKING SETBACK: 10 FT
 GROSS BLDG AREA: 2,358+538 = 2,896 SF



1 PLOT/SITE PLAN
 PP SCALE: 1:120

1533 OLD YORK RD.

